



# MTB TEST EVENT INFORMATION

## TECHNICAL GUIDE

SEPTEMBER 22-24, 2023





# CONTENTS

## **1** WELCOME TO PARIS

p. 3 & 4

## **2** EVENT OVERVIEW

p. 5 & 6

## **3** KEY PERSONNEL

p. 7 & 8

## **4** TEAM INFORMATION

p. 9 > 21

## **5** EVENT SCHEDULE

p. 22 & 23

## **6** SITE & COURSE MAP

p. 24 > 27

## **7** FACILITIES & SERVICES

p. 28 > 30

## **8** MEDIA INFORMATION

p. 31 > 33

## **9** MEDICAL SERVICES & HOSPITALS

p. 34 > 36

## **10** SITUATION PLAN & ACCESS ROUTES

p. 37 > 40

## **11** LOGISTICAL ASPECTS

p. 41 & 42

## **12** GENERAL INFORMATION

p. 43 & 44



***WELCOME TO PARIS !***

# ***WELCOME TO PARIS!***

The Paris 2024 Olympic Games Organising Committee is delighted to welcome your team and athletes in France for the Mountain Bike test event.

This stage is a key point of preparation for the XCO events that will take place in July 2024 during the Paris Olympic Games. The main objective is to confirm that the course is operational and complies with expectations in terms of sport, safety, logistics, flows and accessibility.

It will also be an opportunity for all stakeholders to discover the site, which has never hosted an international sporting event before.

We want the experience to be positive and constructive for everyone, with the aim of delivering top-level competitions during Games Time.

This guide is intended to help you prepare and manage your stay at the venue and details the various practical information you will need.



In consultation with the UCI, this test event is included in the international calendar and takes the form of an invitational race. No UCI points or prize money will be awarded at the end of the competition. In the same logic, no entry fees will be required to take part in this test event. The rules concerning quotas and entry procedures are specified in the document.



# ***EVENT OVERVIEW***

EVENT	PARIS 2024 MTB XCO TEST EVENT
<b>RACES</b>	Men & Women MTB XCO races
<b>DATES</b>	September 22>24, 2023
<b>COMPACT SCHEDULE</b>	<p><b>Friday 22<sup>nd</sup> September :</b></p> <ul style="list-style-type: none"> <li>• UCI Course inspection</li> <li>• Rider Confirmation</li> <li>• Trackwalk : athletes and coaches</li> <li>• Official XCO trainings</li> </ul> <p><b>Saturday 23<sup>rd</sup> September :</b></p> <ul style="list-style-type: none"> <li>• Official XCO trainings</li> <li>• Team Manager's meeting</li> </ul> <p><b>Sunday 24<sup>th</sup> September :</b></p> <ul style="list-style-type: none"> <li>• Official XCO trainings</li> <li>• Women &amp; Men Test Event</li> <li>• Victory ceremonies</li> </ul>
<b>TRACK</b>	<p><b>Elancourt XCO Track</b></p> <ul style="list-style-type: none"> <li>• Length : 4,35 km</li> <li>• Elevation gain / lap : 110 m / lap</li> <li>• Start loop : 2,2 km</li> </ul>
<b>RACE CATEGORY</b>	No prize money, no UCI points, no entry fees
<b>PARTICIPANTS</b>	<ul style="list-style-type: none"> <li>• Athletes : up to 42 Nations : 54 men / 54 women</li> <li>• Medias : 75 / 100 Accreditations delivered</li> <li>• Public on site : up to 3000 spectators (24th September only)</li> </ul>



# ***KEY STAFF***

## PARIS 2024 COMPETITION MANAGEMENT

Cycling Manager	Anne LE PAGE (FRA)
MTB Discipline Manager	Bertrand JOSUE (FRA)
Technical Operations Manager	Yannick RANNOU (FRA)
Field of Play Coordinator	Emilien BAILLET (FRA)
Sport Services Coordinator	Charlotte TESSIER (FRA)
Administration Coordinator	Elise PICARD (FRA)

## UNION CYCLISTE INTERNATIONALE (UCI)

UCI Sports Director	Peter VAN DEN ABEELE (BEL)
UCI Head of Major Events & Olympics	Kevin MACCUISH (CAN)
UCI Technical Delegate	Simon BURNEY (GBR)

## INTERNATIONAL COMMISSAIRES

UCI President of the Commissaires Panel	Frederica GUARNIERO (ITA)
UCI Secretary	Thierry NUNINGER (FRA)





# ***SPECIFIC TEAM INFORMATION***

# SPORT INFORMATION DESK OPENING HOURS

The Sport Information Desk will be available on the following dates and times :

Friday 22nd September	09:00 > 18:00	General enquiries
	10:00 > 12:00	<i>Rider confirmation</i>
Saturday 23rd September	09:00 > 18:00	General enquiries
Sunday 24th September	09:00 > 18:00	General enquiries

The Sport Information Desk will be located inside the Team Area, a specific signage will be in place.



# ENTRY DETAILS

**This event is reserved for invited national federations only and will be organized to welcome the maximum participation of 113 athletes (54 men & 54 women), representing up to 42 nations.**

## ● Opening of entries

August 1st, 2023

## ● Deadline for entries

September 1st, 2023

## ● Generic Specificities

- No entry fees
- No UCI points awarded
- No prize money

## ● Registration from

The Entry form will be sent directly to the NF on the 1<sup>st</sup> of August.

**For any enquiries, please contact :**  
**[epicard@paris2024.org](mailto:epicard@paris2024.org)**

## ● Extra athletes for training only

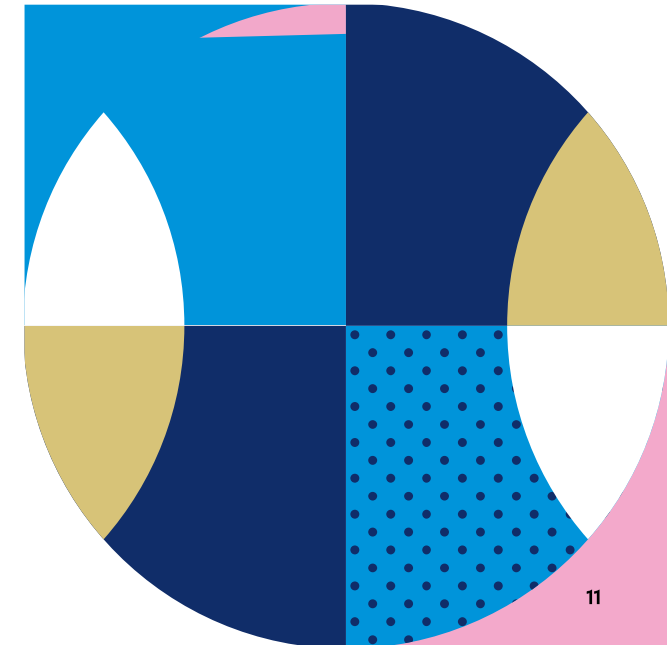
Possibility to add extra athletes for training sessions only, within the limit of 15 extra athletes per gender, according to the UCI Mountain Bike Olympic Qualification Ranking:

- Nations ranked from 1 to 5 : 2 extra athletes / nation
- Nations ranked from 6 to 10 : 1 extra athlete / nation

### IMPORTANT NOTICE :

- Please note for National Federation who are eligible and who wish to make use of the extra rider quota for training only, those riders must be ranked lower in the UCI ranking\* than the lowest ranked rider from that nation entered for the race.

\* Ranking of reference : 15th august 2023



# ENTRY DETAILS : QUOTA GUIDELINES

Based on the UCI Mountain Bike Olympic Qualification Ranking of 15<sup>th</sup> August 2023 as below per continent, the following quotas of riders will be determined for women & men :

Continent	Nations	Number of Riders	Total Number of Riders
Oceania	Ranked 1	2	2
Oceania	Ranked 2	1	1
Africa	Ranked 1	2	2
Africa	Ranked 2 to 3	1	2
Asia	Ranked 1 to 2	2	4
Asia	Ranked 3 to 5	1	3
America	Ranked 1	3	3
America	Ranked 2 to 3	2	4
America	Ranked 4 to 8	1	5
Europe	Ranked 1 to 3	3	9
Europe	Ranked 4 to 8	2	10
Europe	Ranked 9 to 17	1	9
		<b>Total Nations</b>	<b>35</b>
		<b>Total Riders</b>	<b>54</b>

## IMPORTANT NOTICE :

- Please note that athletes registered on the Nation official quota must start the race on Sunday 24 September, except for medical reasons approved by the race doctor. Penalties will be imposed if this rule is not respected.

*NOTE: France will be invited to registered a second team (B team) in each event. The number of riders will be the same as the France 'A' team. These riders will be in addition to the 54 men and 54 women.*

# ENTRY DETAILS : QUOTAS / NATION

CONTINENT	UCI RANK August 15th, 23	MEN		WOMEN	
		COUNTRY	MAXIMUM QUOTA FOR MEN	COUNTRY	MAXIMUM QUOTA FOR WOMEN
OCEANIA	Ranked 1	NEW ZEALAND	2	AUSTRALIA	2
OCEANIA	Ranked 2	AUSTRALIA	1	NEW ZEALAND	1
AFRICA	Ranked 1	SOUTH AFRICA	2	SOUTH AFRICA	2
AFRICA	Ranked 2	LESOTHO	1	MAURITIUS	1
AFRICA	Ranked 3	NAMIBIA	1	ZIMBABWE	1
ASIA	Ranked 1	KAZAKHSTAN	2	KAZAKHSTAN	2
ASIA	Ranked 2	JAPAN	2	JAPAN	2
ASIA	Ranked 3	MALAYSIA	1	PHILIPPINES	1
ASIA	Ranked 4	SINGAPORE	1	THAILAND	1
ASIA	Ranked 5	PHILIPPINES	1	MALAYSIA	1
AMERICA	Ranked 1	BRAZIL	3	UNITED STATES	3
AMERICA	Ranked 2	CANADA	2	BRAZIL	2
AMERICA	Ranked 3	UNITED STATES	2	CANADA	2
AMERICA	Ranked 4	CHILE	1	ARGENTINA	1
AMERICA	Ranked 5	COLOMBIA	1	MEXICO	1
AMERICA	Ranked 6	ARGENTINA	1	COLOMBIA	1
AMERICA	Ranked 7	MEXICO	1	CHILE	1
AMERICA	Ranked 8	PUERTO RICO	1	PUERTO RICO	1
EUROPE	Ranked 1	SWITZERLAND	3	SWITZERLAND	3
EUROPE	Ranked 2	FRANCE	3	FRANCE	3
EUROPE	Ranked 3	ITALY	3	NETHERLANDS	3
EUROPE	Ranked 4	SPAIN	2	AUSTRIA	2
EUROPE	Ranked 5	BELGIUM	2	ITALY	2
EUROPE	Ranked 6	GERMANY	2	DENMARK	2
EUROPE	Ranked 7	GREAT BRITAIN	2	GREAT BRITAIN	2
EUROPE	Ranked 8	DENMARK	2	GERMANY	2
EUROPE	Ranked 9	AUSTRIA	1	SWEDEN	1
EUROPE	Ranked 10	POLAND	1	POLAND	1
EUROPE	Ranked 11	NORWAY	1	CZECHIA	1
EUROPE	Ranked 12	ROMANIA	1	BELGIUM	1
EUROPE	Ranked 13	CZECHIA	1	SLOVENIA	1
EUROPE	Ranked 14	ISRAEL	1	ESTONIA	1
EUROPE	Ranked 15	LATVIA	1	UKRAINE	1
EUROPE	Ranked 16	UKRAINE	1	HUNGARY	1
EUROPE	Ranked 17	NETHERLANDS	1	SPAIN	1

Based on the UCI Mountain Bike Olympic Qualification Ranking of 15<sup>th</sup> August 2023, please find the official quotas per nation for women & men.

In case some National Federations would not use their quota (partially or totally), the free quotas would be reallocated to the next National Federation according to the ranking per continent. These National Federations concerned will be contacted at the beginning of September to confirm acceptance of their quota for the Test Event.

# ENTRY DETAILS : EXTRA TRAINING QUOTAS

## Extra Training Quotas for MEN :

Rank	Name	Nation Code	Continent	Points	Men Extra Training Quota
1	SWITZERLAND	SUI	EUR	7224	2
2	FRANCE	FRA	EUR	6498	2
3	ITALY	ITA	EUR	5643	2
4	SPAIN	ESP	EUR	5406	2
5	BELGIUM	BEL	EUR	4647	2
6	GERMANY	GER	EUR	4203	1
7	GREAT BRITAIN	GBR	EUR	4069	1
8	BRAZIL	BRA	AME	3830	1
9	NEW ZEALAND	NZL	OCE	3828	1
10	SOUTH AFRICA	RSA	AFR	3715	1

## Extra Training Quotas for WOMEN :

Rank	Name	Nation Code	Continent	Points	Women Extra Training Quota
1	SWITZERLAND	SUI	EUR	7838	2
2	FRANCE	FRA	EUR	7497	2
3	NETHERLANDS	NED	EUR	6111	2
4	UNITED STATES	USA	AME	5756	2
5	AUSTRIA	AUT	EUR	5646	2
6	ITALY	ITA	EUR	5609	1
7	DENMARK	DEN	EUR	5605	1
8	GREAT BRITAIN	GBR	EUR	3956	1
9	AUSTRALIA	AUS	OCE	3814	1
10	BRAZIL	BRA	AME	3582	1
12	SWEDEN	SWE	EUR	3446	1

# TEAM OFFICIALS

The number of Team Officials per Nation are based on the total number of athletes included in the Official Quota (training + race), on the following basis :

- Total of 6 athletes (Women + Men) = 8 Team Officials
- Total of 5 athletes (Women + Men) = 7 Team Officials
- Total of 4 athletes (Women + Men) = 6 Team Officials
- Total of 3 athletes (Women + Men) = 5 Team Officials
- Total of 2 athletes (Women + Men) = 4 Team Officials
- Total of 1 athlete (Women or Men) = 3 Team Officials

**IMPORTANT NOTICE :** The extra athletes coming for trainings only do not give the right to extra Team Officials.

COUNTRY	MAXIMUM QUOTA FOR MEN	MAXIMUM QUOTA FOR WOMEN	TOTAL ATHLETES	MAXIMUM NUMBER OF TEAM OFFICIALS
NEW ZEALAND	2	1	3	5
AUSTRALIA	1	2	3	5
SOUTH AFRICA	2	2	4	6
NAMIBIA	1	0	1	3
LESOTHO	1	0	1	3
ZIMBABWE	0	1	1	3
MAURITIUS	0	1	1	3
KAZAKHSTAN	2	2	4	6
JAPAN	2	2	4	6
MALAYSIA	1	1	2	4
SINGAPORE	1	0	1	3
PHILIPPINES	1	1	2	4
THAILAND	0	1	1	3
BRAZIL	3	2	5	7
CHILE	1	1	2	4
CANADA	2	2	4	6
UNITED STATES	2	3	5	7
MEXICO	1	1	2	4
COLOMBIA	1	1	2	4
PUERTO RICO	1	1	2	4
ARGENTINA	1	1	2	4
SWITZERLAND	3	3	6	8
FRANCE	3	3	6	8
ITALY	3	2	5	7
SPAIN	2	1	3	5
BELGIUM	2	1	3	5
GERMANY	2	2	4	6
GREAT BRITAIN	2	2	4	6
DENMARK	2	2	4	6
AUSTRIA	1	2	3	5
POLAND	1	1	2	4
NORWAY	1	0	1	3
ROMANIA	1	0	1	3
CZECHIA	1	1	2	4
ISRAEL	1	0	1	3
LATVIA	1	0	1	3
UKRAINE	1	1	2	4
NETHERLANDS	1	3	4	6
HUNGARY	0	1	1	3
SLOVENIA	0	1	1	3
ESTONIA	0	1	1	3
SWEDEN	0	1	1	3

# TEAM PLATES & RACING OUTFIT

## RIDER'S PLATES :

The rider's plates will be distributed during the Rider's confirmation. The same plates will be used for training and race.

## TEAM PLATES :

Each NF will be given two Team plates, which will be mandatory to access the track during the trainings.

## RACING OUTFIT :

Athletes will be required to race wearing their national federation kit.

The presence of partners logos must be limited as much as possible.

# ACCREDITATION

## TEAMS ACCREDITATION

### GENERAL RULES :

Accreditation will be required to access Elancourt MTB course. Please note that access to the site won't be allowed without accreditation.

All accreditations will be distributed directly to your accommodation before your arrival. Your accommodation address will be asked later through a form that will be sent to all NOCs.

Please note : a UCI rainbow pass won't be valid for the event

### ACCREDITATION PROCESS :

Accreditation requests will be made via a dedicated platform. Each NF will receive a link by email to access this platform and make their requests. Once the request has been made, it will be studied and validated by the organisation. Accreditation requests must comply with the athlete and official team quotas defined on pages 13 and 14.

### FEED / TECH ZONE PASSES

2 feed / tech zone passes per nation will be issued. NF's must collect the Feed and Technical Zone passes from the Rider Confirmation desk during the times mentioned below.



# VEHICLE ACCESS

## TEAMS DEDICATED CAR PARK

### GENERAL RULES :

All NF vehicles wishing to access the event site will need an accredited parking pass.

All vehicles passes will be distributed directly to your accommodation before your arrival. Your accommodation address will be asked later through a form that will be sent to all NF.

### Vehicle Access Passes:

Every competing NF will be allocated with vehicle passes. Only NF vehicles with appropriate pass will be granted access to the venue and will park in a designated parking location close to the team boxes. All vehicles entering the venue may be subjected to security checks.

### PARKING P1 :

> **Parking lot P1** : inside the secured zone

- Located close to the team tents
- Vehicle size : up to utility vehicles (maximum length : 6m long)
- Accesses slot :
  - Thursday 21 Sept. from 9:00 to 18:00
  - Friday 22 Sept. from 8:00 to 12:00
- No vehicles movement will be allowed between the 22<sup>nd</sup> and the end of the competition on the 24<sup>th</sup> September.

### PARKING P2 :

- **Parking lot P2** : outside the site
- This parking lot will allow vehicle movement any time each day from 8:00 am to 19:00 pm

### IMPORTANT NOTICE :

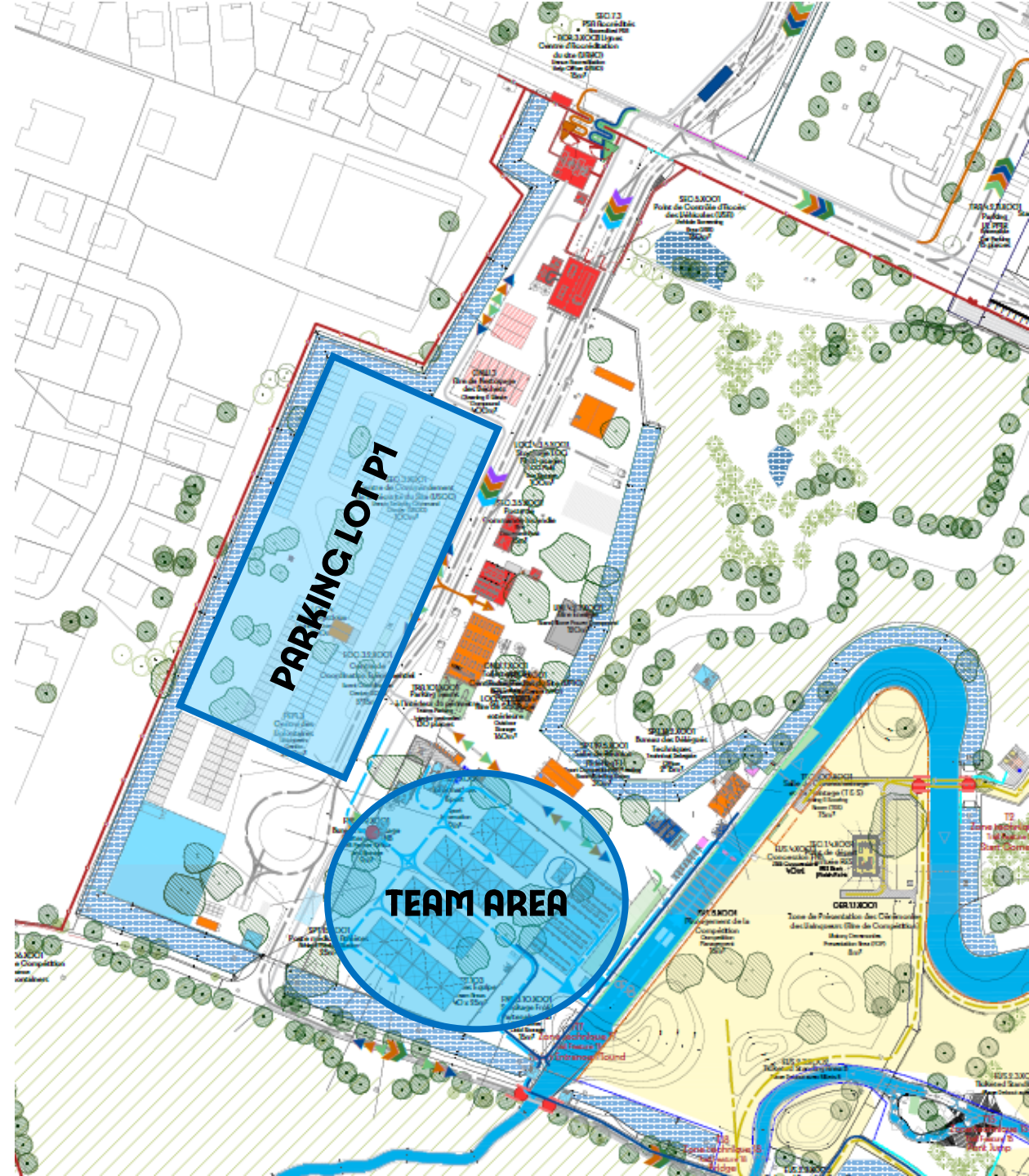
- Please note that a form will be sent to NF in August to book slots to enter the P1 parking lot on the 21<sup>st</sup> September in order to smoothen the access and avoid as much as possible the waiting time.

# VEHICLE ACCESS

## PARKING LOT P1: LONG TERM TEAM VEHICLES

- **Parking lot P1: 100 parking spaces inside the secured zone**
- **Located close to the team tents**
- **Vehicle size** : up to utility vehicles (maximum length : 6m long)
- **Access slots** :
  - Thursday 21 Sept. from 9:00 to 18:00
  - Friday 22 Sept. from 8:00 to 12:00
  - NOCs will be proposed to book slots on the 21<sup>st</sup> to organize the vehicles access and smoothen the flows
- Access through the Vehicle Screening Area (USA) only
  - Estimated control time per vehicle : 5 to 7 min

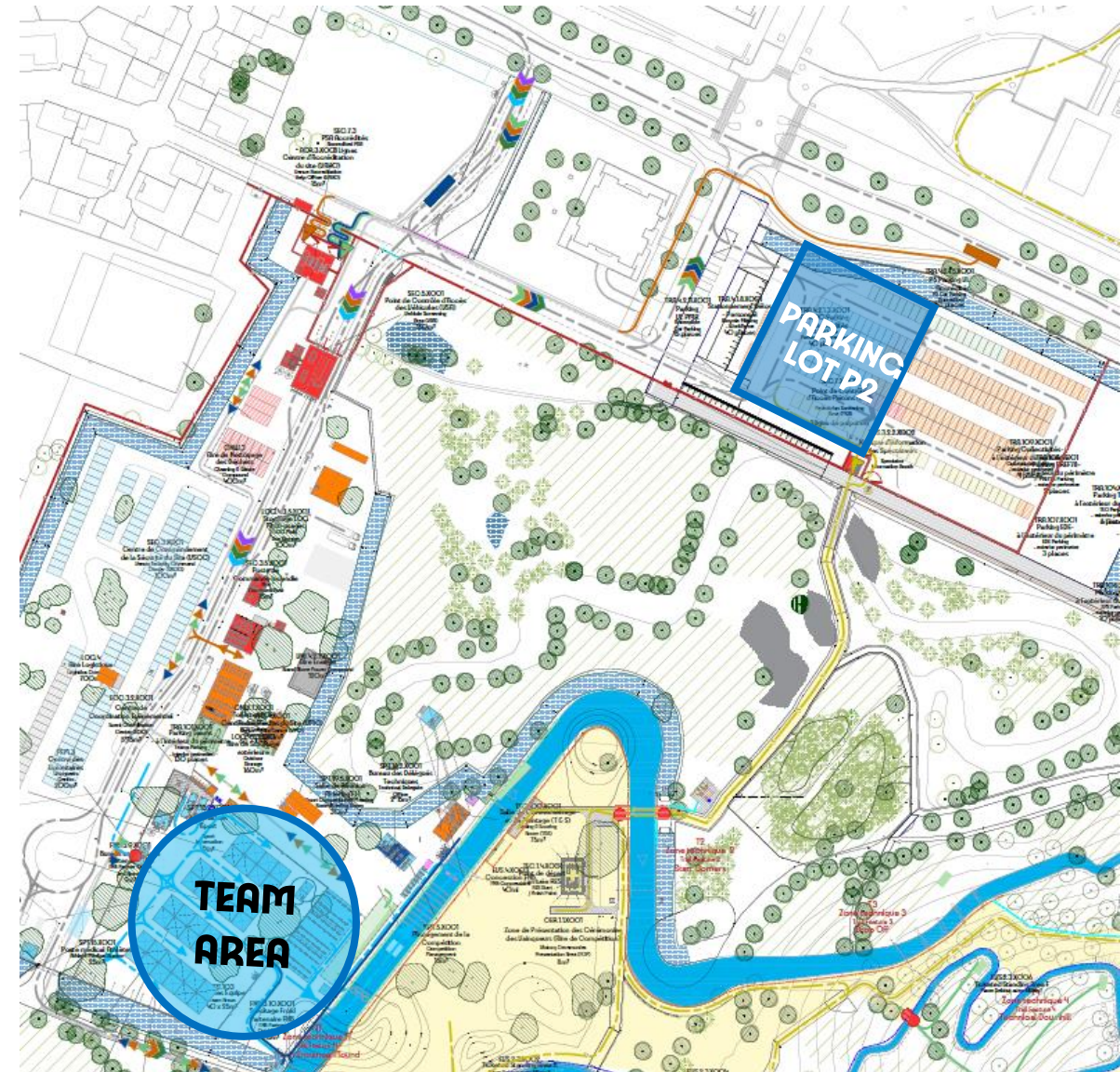
**No vehicles movement will be allowed between the 22<sup>nd</sup> and the end of the competition on the 24<sup>th</sup> Septembre on the P1**



# VEHICLE ACCESS

## PARKING LOT P2 : SHORT TERM TEAM VEHICLES

- **Parking lot P2 : 47 parking spaces outside the secured zone**
- **Located close to the Pedestrian Screening Area (PSA)**
- **Vehicle size :** up to utility vehicles (maximum length : 6m long)
- **Access slots :**
  - Every day from 21<sup>st</sup> to 24<sup>th</sup>
  - From 8:00 to 19:00
- Vehicles movement will be allowed at any time every day from 8:00 to 19:00
- A dedicated signage will be in place. All Team Vehicles must show the P2 Parking sticker.



# VEHICLE ACCESS

## PARKING LOT P1 & P2 : VEHICLES QUOTA / NOCS

PARIS2024

COUNTRY	TOTAL ATHLETES	P1 : LONG TERM	P2 : SHORT TERM
		MAXIMUM NUMBER OF VEHICLES FOR P1	MAXIMUM NUMBER OF VEHICLES FOR P2
NEW ZEALAND	3	2	1
AUSTRALIA	3	2	1
SOUTH AFRICA	4	3	1
NAMIBIA	1	1	1
LESOTHO	1	1	1
ZIMBABWE	1	1	1
MAURITIUS	1	1	1
KAZAKHSTAN	4	3	1
JAPAN	4	3	1
MALAYSIA	2	2	1
SINGAPORE	1	1	1
PHILIPPINES	2	2	1
THAILAND	1	1	1
BRAZIL	5	5	2
CHILE	2	2	1
CANADA	4	3	1
UNITED STATES	5	5	2
MEXICO	2	2	1
COLOMBIA	2	2	1
PUERTO RICO	2	2	1
ARGENTINA	2	2	1

COUNTRY	TOTAL ATHLETES	P1 : LONG TERM	P2 : SHORT TERM
		MAXIMUM NUMBER OF VEHICLES FOR P1	MAXIMUM NUMBER OF VEHICLES FOR P2
SWITZERLAND	6	5	2
FRANCE	6	5	2
ITALY	5	5	2
SPAIN	3	2	1
BELGIUM	3	2	1
GERMANY	4	3	1
GREAT BRITAIN	4	3	1
DENMARK	4	3	1
AUSTRIA	3	2	1
POLAND	2	2	1
NORWAY	1	1	1
ROMANIA	1	1	1
CZECHIA	2	2	1
ISRAEL	1	1	1
LATVIA	1	1	1
UKRAINE	2	2	1
NETHERLANDS	4	3	1
HUNGARY	1	1	1
SLOVENIA	1	1	1
ESTONIA	1	1	1
SWEDEN	1	1	1

# ***SPECIFIC TEAM INFORMATION***

## **VICTORY CEREMONIES**

- The victory ceremonies will take place at the end of the two races. NF clothing must be worn on the podium.
- The location of the podium and preparation area will all be confirmed at the team managers meeting on September 23rd.
- A mixed zone will be set up after the finish line where interviews and pictures can take place. It will be optional for athletes to participate.

## **IMAGE USE AGREEMENT**

On the first day, an image use agreement must be signed by all the participant to the event, allowing the Paris 2024 OC to publish photos and videos.



# ***EVENT SCHEDULE***

# EVENT SCHEDULE

## DAY 1 : Friday 22nd September

- 08:00 > 11:00 : UCI Course Inspection
- 10:00 > 12:00 : Rider's Confirmation
- 11:00 > 13:00 : Course open for trackwalk (no bikes allowed)
- 14:00 > 18:00 : Official XCO training : women & men

## DAY 2 : Saturday 23rd September

- 10:00 > 12:30 : Official XCO training – reserved for women
- 12:30 > 13:30 : Official XCO training – all riders
- 13:30 > 16:00 : Official XCO training – reserved for men
- 16:00 > 17:00 : Break
- 17:00 > 18:00 : Team Manager's meeting

## DAY 3 : Sunday 24th September

- 10:00 > 11:00 : Official XCO training – reserved for women
- 11:00 > 12:00 : Official XCO training – reserved for men
- 11:30 : Spectators gates open
- 12:30 > 13:00 : Break
- 13:00 > 14:30 : Women XCO Test Event
- 14:30 > 15:00 : Break
- 15:00 > 16:30 : Men XCO Test Event
- 16:30 > 16:38 : Break
- 16:38 > 16:45 : Women XCO Victory Ceremony
- 16:47 > 16:54 : Men XCO Victory Ceremony
- 18:00 : Spectator gates close



# ***SITE & COURSE MAP***



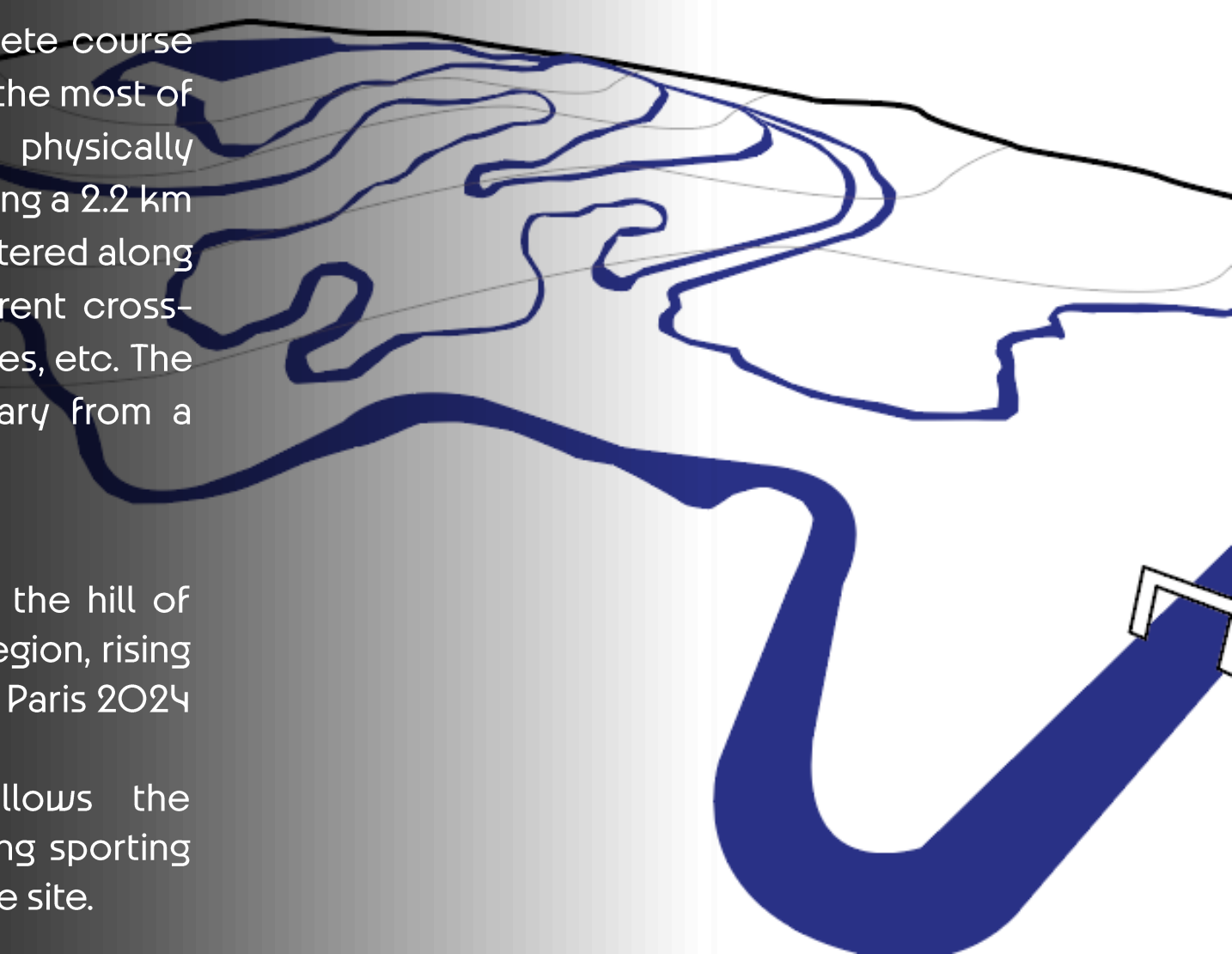
## ABOUT THE SITE & THE TRACK

The cross-country track offers a varied and complete course that progress through the Elancourt hillside to make the most of its relief and favour the most technically and physically complete athletes. The course is 4.4 km long (including a 2.2 km start loop) and propose various technical zones scattered along the course corresponding to the standards of current cross-country, such as rock gardens, jumps, technical singles, etc. The gradient is 110m per lap, and the track widths vary from a maximum of 10m to a minimum of 1 m.

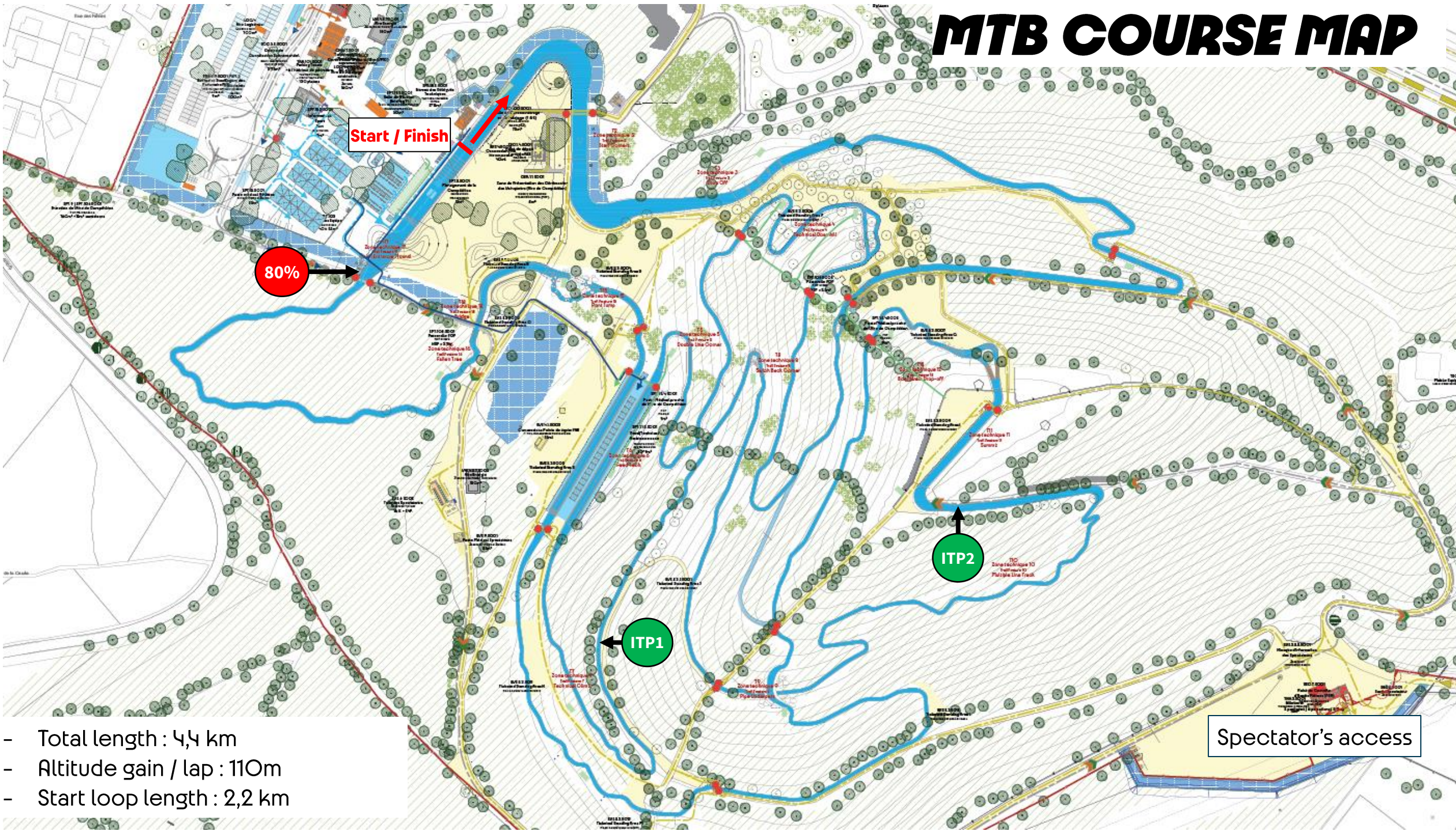
---

Located west of Paris in the Yvelines department, the hill of Elancourt is the highest point of the Ile-de-France region, rising to 231m. The site will host the MTB events during the Paris 2024 Olympic Games.

The choice of Elancourt by Paris 2024 allows the reinforcement and supervision of an already existing sporting activity, while improving the ecological benefit of the site.



# MTB COURSE MAP



Start / Finish

80%

ITP1

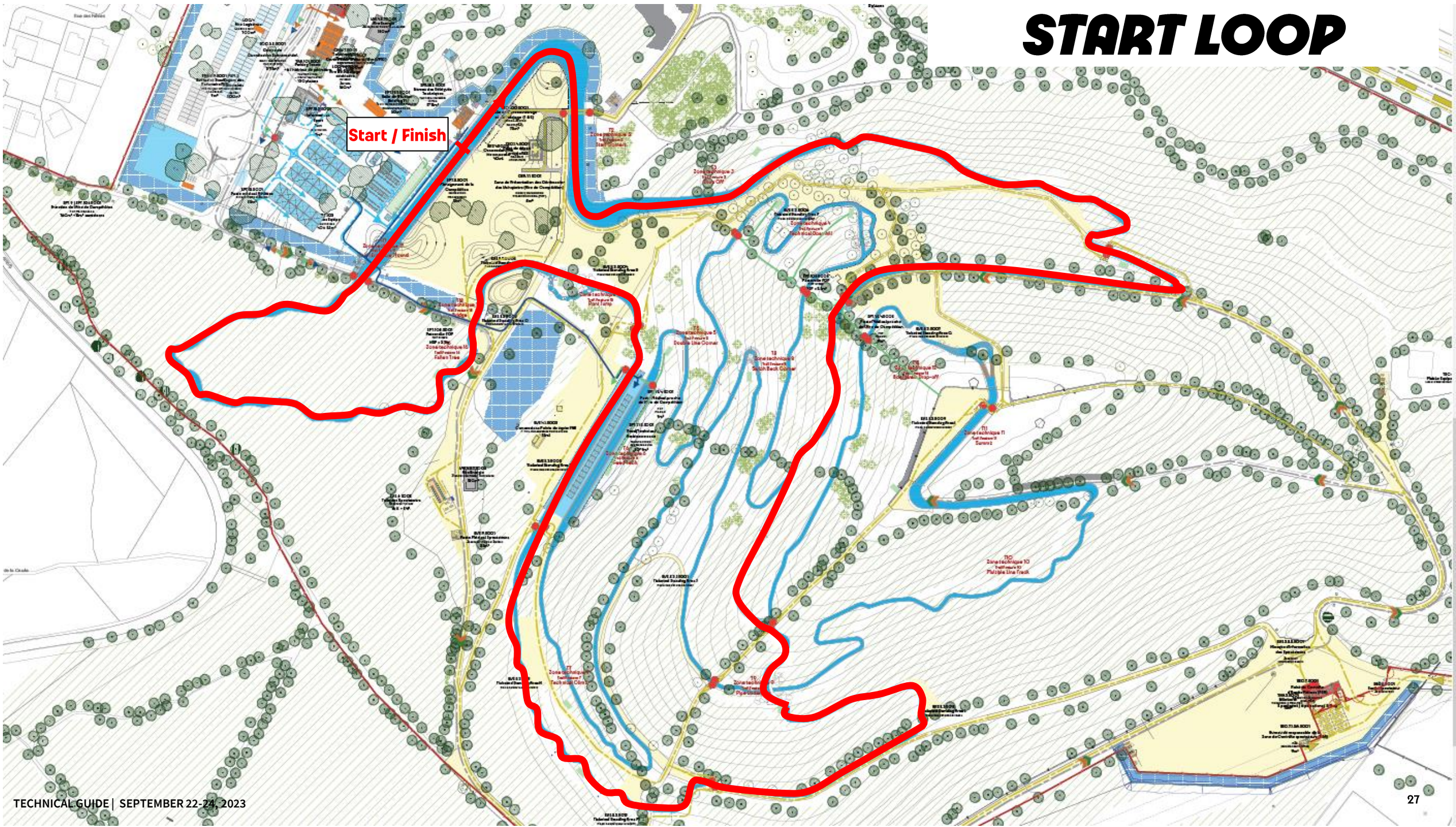
ITP2

Spectator's access

- Total length : 4,4 km
- Altitude gain / lap : 110m
- Start loop length : 2,2 km

# START LOOP

Start / Finish



# 7

## ***FACILITIES & SERVICES***

# FACILITIES & SERVICES

Every competing Nation will be allocated a dedicated space under the team tents. These team tents will be located inside the team area, and each space will be identified by a NOC code. Each space is supplied with tables and chairs. The team area will be secured by a dedicated security crew on a 24h basis.

## Venue restricted items :

- Alcohol
- Glass bottles
- Bladed items
- Inflammable items
- Drones

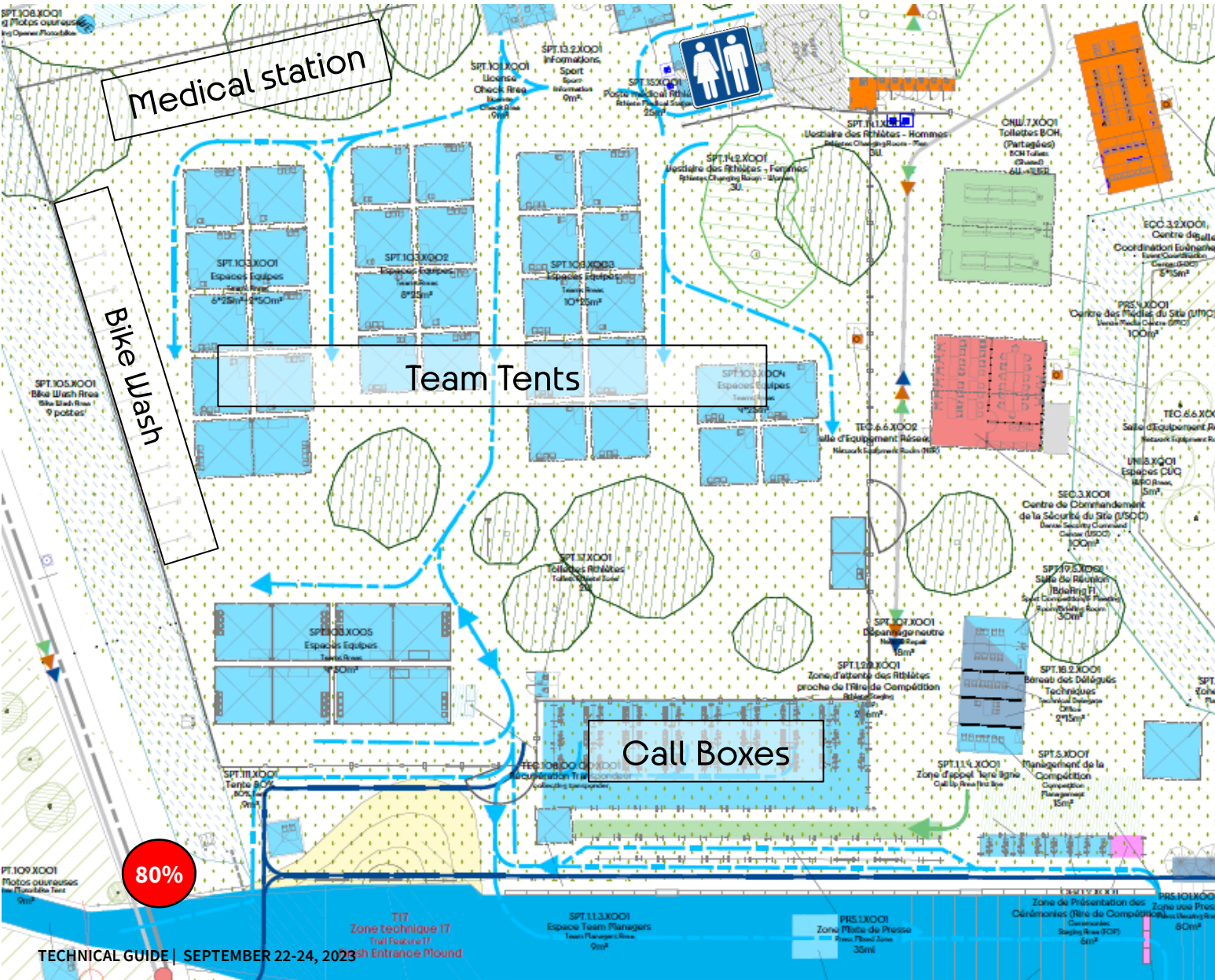
**Note :** *smoking is not allowed on venue, except in the designated areas*

Ajouter adaptateur prise france

## Other facilities at the competition venue will include:

- **Bicycle maintenance and repair services – Shimano neutral services**
- **A bike wash area will be provided in the Team Area**
- **Warm up rollers – a limited number will be provided on a first come first served basis. Request at the sport info desk.**
- **A mixed zone area - where accredited medias may conduct interviews with athletes after competition will be set up after the finish line**
- **Sport information desk – for all accreditation, rider registration, general information, start lists, results etc**
- **Medical – a medical treatment tent will be in located in the team area. Medical teams will also be located at several points along the FOP**
- **A radiology truck (including radiology, ultrasound and scanner) will be available on site**
- **Changing rooms (including toilets and showers) will be available for athletes inside the team area.**
- **A water fountain will be available on training days and competition day. Competing NFs / teams are also permitted to bring their own food and liquid for personal use on to the venue, but there are no refrigerators available for the storage of any perishable items.**

# TEAM AREA :



80%





# ***MEDIA INFORMATION***

# MEDIA INFORMATION

## General information

Olympic Games Test Event organised by Paris 2024 are international-standard competitions created in order to test specific aspects of operations linked to certain sports or venues, in preparation for the Olympic and Paralympic Games.

The Mountain Bike test event at Elancourt Hill will bring together more than 100 international athletes, who will participate in a Mountain Bike race, offering riders an opportunity to test the future Olympic course.

Detailed information on all Paris 2024 test events can be found [here](#).

## Event schedule

- 22-23 September : Official trainings
- 24 September : Women's and Men's competitions

## Accreditation

Media accreditation request form : <https://forms.office.com/e/tbqF2tWXMn>

Submission deadline : **3 September 2023**. Applications received after this deadline cannot be considered.

Please note that due to limited space, not all applications may be approved. You will receive a decision whether your application has been approved or not, no later than **10 September 2023**.



# ***MEDIA INFORMATION***

## **Facilities:**

At each test event, the following Media Facilities will be available:

- Venue Media Centre
- Mixed Zone
- Photo Positions

## **Contact:**

For further questions and inquiries on media operations, please contact us at [pressoperations@paris2024.org](mailto:pressoperations@paris2024.org)



# ***MEDICAL SERVICES & HOSPITALS***

# MEDICAL SERVICES



## ➤ Radiology Truck :

- Ultrasound
- Radiology
- Scanner



## ➤ 1 Medical station in the Team Area



## ➤ 2 Medical station on the FOP



## ➤ 4 mobile medical crew along the track

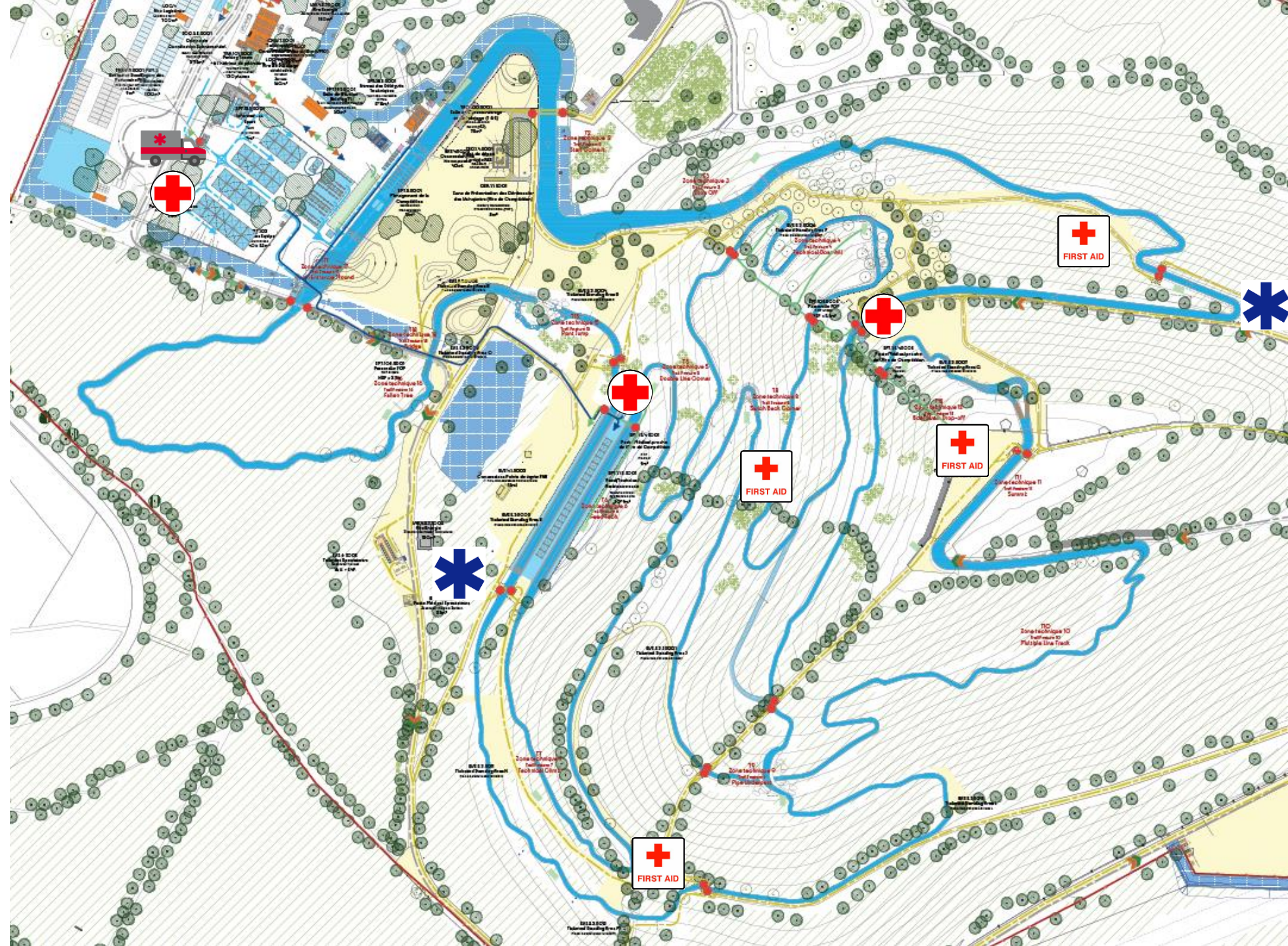
## ➤ Total medical crew :

- 3 Emergency Doctors
- 1 Sports Doctor
- 3 Nurses
- 22 First aider



## ➤ 2 ambulances

## ➤ 2 quad bikes



# MEDICAL SERVICES & HOSPITALS

## Local hospital :

Centre Hospitalier de Versailles – Hôpital André Mignot  
177 Rue de Versailles, 78150 Le Chesnay-Rocquencourt

[Google Maps](#)

Tel : +33 1 39 63 91 33

<https://www.ch-versailles.fr/>

## Request for emergency assistance :

The following number can be used for immediate public security response outside the venue : **18** or **112**  
> Emergency, Ambulance services and Fire Département.

## Doping Control

Doping Control will be conducted in accordance with the regulations of the UCI anti-doping rules.  
In competition, testing may be carried out at the venue.

10

***SITUATION PLAN  
& ACCESS ROUTES***

# FROM AIRPORTS TO ELANCOURT

Charles De Gaulle Airport



**From Charles de Gaulle Airport > Elancourt Hill**

- From 45 min to 1h30
- [Google Maps](#)

Elancourt Hill



Orly Airport



**From Orly Airport > Elancourt Hill**

- From 35 min to 1h
- [Google Maps](#)

# SITUATION PLAN & ACCESS ROUTES



Elancourt Hill

Venue address:

Rue Alain Colas

78990 Elancourt

[48.791589, 1.964169](https://www.google.com/maps/place/48.791589,1.964169)

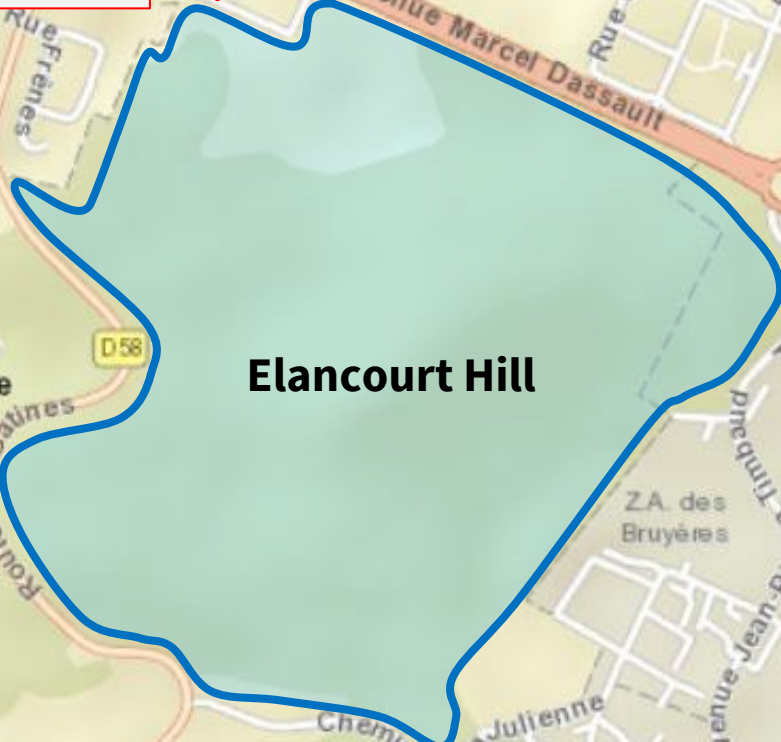
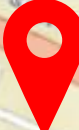
**From RER Station Saint-Quentin-en Yvelines > Elancourt Hill**

- 10 min by car

- [Google Maps](#)

# SITE ACCESS FOR NOCS

Entrance for NOCs  
vehicles and pedestrians



Venue address:  
Rue Alain Colas  
78990 Elancourt  
[48.791589, 1.964169](https://www.google.com/maps/place/48.791589,1.964169)





# 11

## ***LOGISTICAL ASPECTS***

# LOGISTICAL ASPECTS

- **Visa Process**

For all the participants who need a visa to enter France, please contact [epicard@paris2024.org](mailto:epicard@paris2024.org) to request an invitation letter that must be submitted with the visa application at the chosen French Consulate/Embassy abroad.

To request an invitation letter, please send an email to [epicard@paris2024.org](mailto:epicard@paris2024.org) with a list of the applicants, and an application form will be provided.

Prior to deciding for your travel, we recommend you check the visa and work permit.

Please see the below website for further information : <https://france-visas.gouv.fr/en/web/france-visas/>

In this website you will find information on which type of visa you will need to bear. You will also be able to find instructions on how to apply for your visa.

It is also important to remind that the time frame for issuing a visa to enter France will depend on the country where the participant is applying.

- **Wireless devices and radios frequencies**

For the Paris 2024 Test Events, as for Games Times, all wireless equipment must be referenced, but this means free frequencies for the entire programme. All requests from users of wireless equipment during these Test events (OCOG, press, broadcast, IF, CNO, CNP, service providers, partners) must go through this link: [ANFR-Formuler une demande d'autorisation](#). When sending your form, don't forget to select "Test Events (JOP2024)" to ensure that the service is free of charge. ANFR will be also on the venue to ensure spectrum monitoring.



# ***GENERAL INFORMATION***

# CONTACT DETAILS

- Sport Services Coordinator : Charlotte TESSIER – [ctessier@paris2024.org](mailto:ctessier@paris2024.org)
- Admin Coordinator : Elise PICARD – [epicard@paris2024.org](mailto:epicard@paris2024.org)

## Paris 2024 Organising Committee of the Olympic and Paralympic Games

46 Rue Proudhon

93210 Saint-Denis

[www.paris2024.org/en/](http://www.paris2024.org/en/)

PARIS2024

### Partenaires Mondiaux Worldwide Partners



### Partenaires Premium Premium Partners



### Partenaires Officiels Official Partners



### Supporteurs Officiels Official Supporters

